

**Available now:
the original as a new part.**



**The Hydraulic Control
Unit of the ATE MK60**

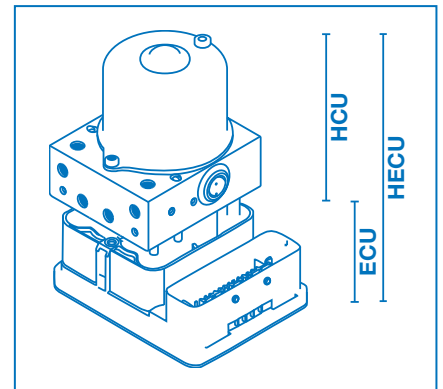
New in the
product range



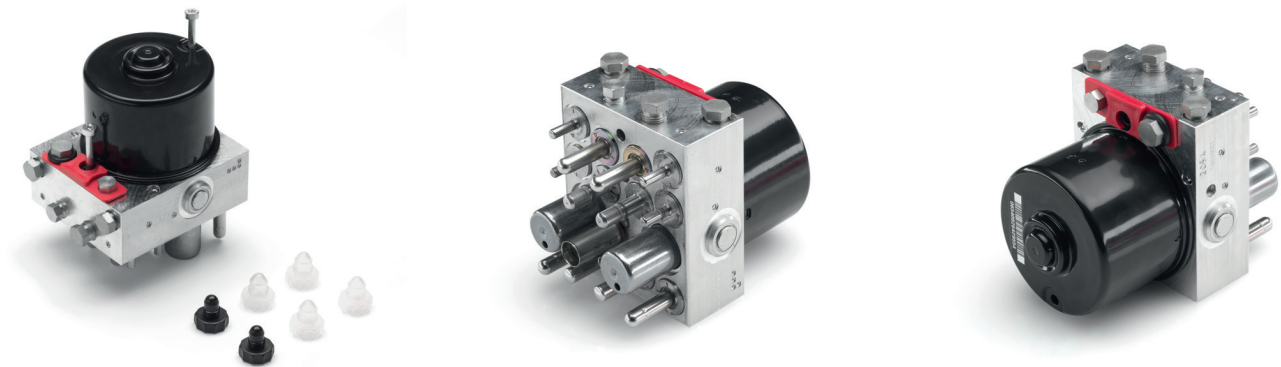
Brakethrough Technology

Precise brake repairs with the Original Hydraulic Control Unit of the ATE MK60

- | The Hydraulic Control Unit (HCU) is now available for the first time in the independent automotive aftermarket.
- | Simple handling: Remove the entire HECU (Hydraulic & Electronic Control Unit), replace the old HCU (Hydraulic Control Unit) with the new one and screw it to the ECU (Electronic Control Unit).
- | Included:
 - | Motor
 - | Valve block
 - | Retaining device (see assembly instructions and assembly video)
 - | 2 new screws
 - | 6 stop plugs for the old HCU
- | Observe the assembly instructions (included)
- | Assembly video at www.ate-brakes.com/MK60



For details on the Hydraulic Control Unit of the ATE MK60, an assembly video and a contact form for individual queries, visit www.ate-brakes.com/MK60



Vehicles that use the hydraulic control units

| Manufacturer | OE number | Model series | Article number |
|----------------------------|---------------|---|----------------|
| VOLKSWAGEN | 1K0 698 517 B | CADDY III , EOS , GOLF Plus , GOLF V , GOLF V Variant, JETTA V , TOURAN I | 24.9145-0001.2 |
| VOLVO | 36001319 | C30 coupe , C70 II convertible, S40 II , V50 | 24.9145-0005.2 |